

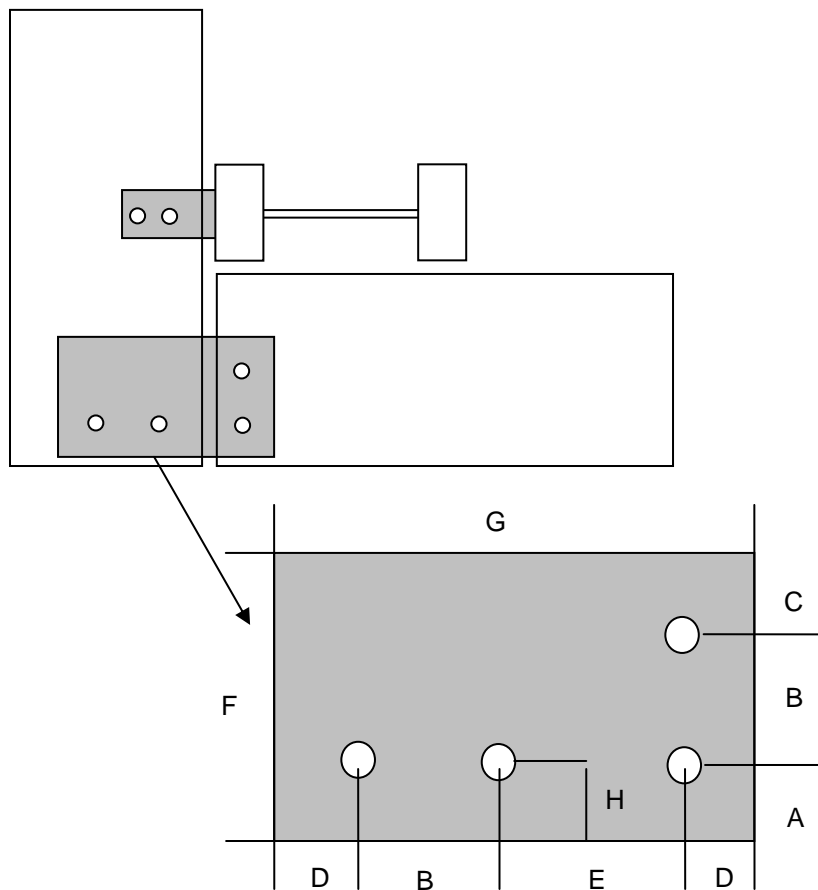
## ■ Design Tips – Purlin Cleats – for end girts

*The ILB® system is formed by a standard range of ILB® Beams connected using fitting plates welded on and then bolted together. The fitting plates may vary slightly depending on the beam selected and the type of connection required.*

*However, there are a standard range of plates from which to select. Plates outside of this standard range will incur extra charge and are subject to longer leadtimes.*

*To assist the design process, ILB have produced a set of design tips.*

This ILB design tip relates to the specification of the **purlin cleats**, where the cleats are used to connect end girts to side wall girts.



The cleat is uses 6mm plate with 4 x 14 holes.

A = 35mm

B = sized to suit the purlin

C = 35mm

D = 25mm

E = 90mm

F = B + 70mm

G = B + 140mm

H = 25mm